

# GREEN DEVELOPMENT BANK LIMITED

Branch office : BAGAR, KASKI DISTRICT

## Estimation Cost of Core Banking

Summary Sheet

Name of Project: Interior Construction of Branch office :: Bagar Branch , Kaski

Name of Employer :: Green Development Bank Limited

S/N	Description of Works	Amount	Remarks
1	Furniture work (Bill No: 1)	-	
2	Chair and sofa (Bill No: 2)	-	
3	Civil and furnishing work (Bill No: 3)	-	
4	Electrical and allied work (Bill No: 4)	-	
5	CCTV Work (Bill No: 5)	-	
6	Computer Network (Bill No: 6)	-	
7	Aircondition (AC) work (Bill No: 7)	-	
	<b>Total Cost</b>	-	
	VAT 13%	-	
	<b>GRAND TOTAL</b>	-	

Total Amount in Words: \_\_\_\_\_

Name of Contractor :

Address :

Contact No :

Name of authorized Person (on behalf of company)

Designation :

Sign and Stamp :

Date :

*[Handwritten Signature]*



*[Handwritten Signature]*

## GREEN DEVELOPMENT BANK LIMITED

Branch office : BAGAR, KASKI DISTRICT

### Estimation Cost of Core Banking

**Bill No.1: Furniture**

S.N	Description of works	Unit	Qty	Rate	Amount	Remarks
<b>1.00</b>	<b>Customer Service Desk</b>					
i	Fabrication, Supply and installation of 19mm thick block board ( Surya /Sagun/Sikhar ) <b>Customer service counter</b> with flip door, including pullout lock able drawer, keyboard tray as per drawing, the work includes Granite (color approved by bank) top as per corporate office design and finishing, 1mm thick Formica, shisham wooden beading with necessary hardware and accessories as per requirement, design, drawing, detail, specification, size and instruction of engineer, all complete. <b>(CSD Size:8-4"x2'-6"x2'-6"ht)</b>	Rnf	8.50		-	
ii	Fabrication, Supply and installation of side Unit <b>Printer table</b> made up of 19mm thick Laminated with 1mm thick formica, Granite (color approved by bank) top as per corporate office design and finishing, with natural matt finish polish all complete. <b>(Size: 3'-6"x1'-11"x30")</b>	set	-		-	
iii	Fabrication, Supply and installation of <b>Filing cabinet</b> made in 19mm thick Plywood ( surya / Sagoon ) in site partition in file size as per required, laminted on exposed surface & approved shade, lock able shutter ( glaze/ solid), decorative wooden bead with with natural matt finish polish all complete as per design . <b>(size :- 4'-00"-0"x1'-4"x2'-9")</b>	Sq.ft.	11.00		-	
<b>2.00</b>	<b>Teller Counter</b>					
i	Fabrication, Supply and installation of block board <b>Teller counter</b> including following materials as per drawing: 2x19 mm thick ply support for front face, Formica finishing, molded skirting of wood at front side as per drawing.16 mm thick granite top on 19mm block board ( surya / Sagun ) and necessary fixing accessories as per drawing.8 mm thick clear glass partition on teller top with 2" thick wooden partition glass support, with flip door.Counter table with Formica laminated at top with key board base, sliding channel sets, CPU space and side cabinet with pullout drawers on sliding channel including necessary fixing accessories, painting all complete and as per design. <b>(Size:7'-9"x2'-6"x4'-0"ht)</b>	Rnf	7.00		-	
ii	Fabrication, Supply and installation of <b>Filing cabinet</b> made in 19mm thick Plywood ( surya / Sagoon ) in site partition in file size as per required, laminted on exposed surface & approved shade, lock able shutter ( glaze/ solid), decorative wooden bead with with natural matt finish polish all complete as per design . <b>(Size: 4'-0" x 2'9" ht. x 1'4")</b>	sft	-		-	
<b>4.00</b>	<b>Branch Manager Table</b>					
i	Fabrication, supply and installation of <b>Branch Manager Table</b> with cpu tray, key board tray and drawers, made up of 19mm block board of <b>Surva ,sagun, shikhar or equivalent brand, Century or Green lame</b> 1mm thick Formica and shisham wooden beading with necessary hardware and accessories as per requirement, design, drawing, detail, specification, size and instruction of engineer, all complete <b>(Table Size: 5'-0"x2'-6"x2'-6"ht)</b>	Set	1.00		-	

*Handwritten signature*



*Handwritten signature*

Bill No.1: Furniture

S.N	Description of works	Unit	Qty	Rate	Amount	Remarks
ii	Fabrication, Supply and installation of <b>Side table</b> , the table 19mm thick Laminated with 1mm thick formica, CPU unit spase side drawer, Filing space, key board tray with natural matt finish polish all complete. (Size: 3-6"x1'-4"x30")	Set	1.00		-	
iii	Fabrication, Supply and installation of <b>Filing cabinet</b> made in 19mm thick. Plywood in site partition in file size as pre required, laminted on exposed surface & approved shade, lock able shutter ( glaze/ solid ), decorative wooden bead with natural matt finish polish all complete. (size 5'-0"x1'-4"x2'-9" )	Sq.ft.	13.75		-	
<b>5.00 Credit manager Table</b>						
i	Fabrication, supply and installation of <b>Credit Officer Tables</b> with cpu tray, key board tray and drawers, made up of 19mm block board of <u>Surva ,sagun, shikhar or equivalent brand, Century or Green lame</u> 1mm thick Formica and shisham wooden beading with necessary hardware and accessories as per requirement, design, drawing, detail, specification, size and instruction of engineer, all complete (Size: 5'-0"x2'-0"x2'-6"ht)	Set	1.00		-	
ii	Fabrication, supply and installation of <b>Side table</b> , the table 19mm thick Laminated with 1mm thick formica, CPU unit spase side drawer, Filing space, key board tray with natural matt finish polish all complete. (Size: 3-6"x1'-4"x30")	Set	1.00		-	
iii	Fabrication, supply and installation of <b>Filing cabinet</b> made in 19mm thick. Plywood in site partition in file size as pre required, laminted on exposed surface & approved shade, lock able shutter ( glaze/ solid ), decorative wooden bead with natural matt finish polish all complete. (size :- 5'-00"-0"x1'-4"x2'-9" )	sft	13.75		-	
<b>6.00 Writing Desk/Voucher Desk/Helmet Rack</b>						
i	Fabrication, supply and installation of <b>Writing Desk/Voucher Desk /Helmet Rack</b> , made up of 19mm block board of <u>Surva ,sagun, shikhar or equivalent brand, Century or Green lame</u> 1mm thick Formica and shisham wooden beading with necessary hardware and accessories as per requirement, design, drawing, detail, specification, size and instruction of engineer, all complete Size:4'-0"x1'-6"x3'-6"ht	Set	1.00		-	
<b>7.00 Center Table</b>						
	Fabrication, supply and installation of <b>Center Table</b> , made up of 19mm block board of <u>Surva ,sagun, shikhar or equivalent brand, Century or Green lame</u> 1mm thick Formica and shisham wooden beading with necessary hardware and accessories as per requirement, design, drawing, detail, specification, size and instruction of engineer, all complete (rate Only) Size:3'-0"x1'-9"x1'-6"ht	Nos	1.00		-	
<b>8.00 Kitchen rack</b>						

*[Handwritten signature]*



*[Handwritten signature]*

**Bill No.1: Furniture**

S.N	Description of works	Unit	Qty	Rate	Amount	Remarks
	Fabrication, supply and installation of <b>Kitchen rack</b> made up of 18mm waterproof ply , drawers laminated with formica , should be placed below the slab of kitchen including drawers, magnets, stainless steel handle etc finishing all complete. ( 5'-8" x 2'-6" )	Sq.ft.	-		-	
					-	
<b>9.00</b>	<b>Notice board/ pinup board</b>				-	
	Supply of fabric attached soft board ( Notice Board ) with wooden frame.( frame size 4'x 2'6 " )	set	1.00		-	
					-	
<b>10.00</b>	<b>Key hanger</b>				-	
	Fabrication, supply and installation of <b>key hanger</b> made up with soft board, salwood/shisamwood beading <b>Century or Green lame</b> 1mm thick laminet on the exposed surface , SS hanger hook all complet work as per requirement, design, drawing, detail, specification, size and instruction of engineer.				-	
	Size; 18" X 10 "	Set	1.00		-	
					-	
<b>11.00</b>	<b>Suggetion box</b>				-	
	Fabrication and supply of suggetion box made up with soft board, salwood/shisamwood beading <b>Century or Green lame</b> 1mm thick laminet on the exposed surface , SS hanger hook all complet work as per requirement, design, drawing, detail, specification, size and instruction of engineer.				-	
	Size; 18" X 10 "	Set	1.00		-	
					-	
<b>Total of Bill no. 1</b>					-	

*[Handwritten signature]*



*[Handwritten signature]*

# GREEN DEVELOPMENT BANK LIMITED

Branch office : BAGAR, KASKI DISTRICT

## Estimation Cost of Core Banking

Bill No.2: Chair and sofa

S.N	Description of works	Unit	Qty	Rate	Amount
<b>The chair shall be as per head office</b>					
1.00	Branch manager chair	Set	1.00		-
2.00	Staff chair	Set	5.00		-
3.00	Visitor chair	Set	5.00		-
4.00	Three seater waiting chair made up with metal structure with rexin cover	Set	1.00		-
5.00	Two Seator sofa with black rexin	Set	1.00		-
<b>Total of Bill no. 2</b>					-

*[Handwritten signature]*



*[Handwritten signature]*

## GREEN DEVELOPMENT BANK LIMITED

Branch office : BAGAR, KASKI DISTRICT

### Estimation Cost of Core Banking

Bill No.3: Civil and Furnishing work

S.N	Description of works	Unit	Qty.	Rate	Amount	Remarks
<b>1.00</b>	<b>Dismantling work</b>					
i	Dismantling Brick wall, partitions, slabs , floors required for new construction, using cutter on both sides of wall for minimum disturbances to structure retaining its service like sewer, drainage, electricity etc. including collection transportation and disposal of dismantled debris off sites as per drawing, specification and instruction of engineer. (Contractors are highly recommended to visit the site approx 300 sft)	Job	1		-	
					-	
<b>2.00</b>	<b>RCC Work</b>					
i	RCC works in 1:2:4 (cement: sand: agg)with 12mm bar 4" thick at door lintel of brick work including Formwork, centering, shuttering with 12mm thick ply wood for all kinds of concrete work, including necessary props, all complete as per drawing and instructions. ( Photo should be attached with the bill )	Rnf	70		-	
					-	
<b>3.00</b>	<b>Masonry Works</b>					
	Supply and laying of Brick masonry wall with first class chimney made brick, cement sand mortar (1:4) including scaffolding, curing, filling, cleaning and racking out mortar joints, recesses, making lintels where ever required including materials, labor, lead and lift, all complete as per design, drawing, detail, size, specification and instruction of engineer.(# note :cement brand shall be Trishakti, Shivam, Jagadamba or equivalent )				-	
i	4" Brick Wall	Sq.ft.	320.00		-	
ii	9" Brick Wall	Sq.ft.	15.00		-	
					-	
<b>4.00</b>	<b>Cement Plaster Work</b>					
	Plastering all required inner surface wall and ceiling with 1/2" thick. of 1:4 mortar in perfect size, shape, line and level, including cleaning, chipping, cutting and curing, all complete as per design and drawings.	Sq.ft.	670.00		-	
					-	
<b>5.00</b>	<b>Flooring work</b>					
i	Providing and laying 600x600mm vitrified, monolithic white color ( as per central office) tile flooring, up to 20mmthick Screeding works cement sand mortar of 1:4, backing (minimum thickness of backing = 20mm) and filling joints, all complete as per design, drawing, detail, size, specification and instruction of engineer. (including ATM area)	Sq.ft.	220.00		-	

*[Handwritten signature]*



*[Handwritten signature]*

## GREEN DEVELOPMENT BANK LIMITED

Branch office : BAGAR, KASKI DISTRICT

### Estimation Cost of Core Banking

**Bill No.3: Civil and Furnishing work**

S.N	Description of works	Unit	Qty.	Rate	Amount	Remarks
ii	Providing and laying vitrified monolithic/ floor tile (10cm h.) <b>skirting</b> over floor tile and in wall with cement mortar of mix 1:4 backing and filling joints, all complete as per drawing, specification and instructions.	Rnf	120.00		-	
<b>6.00</b>	<b>Gypsum False Ceiling</b>				-	
i	Providing and fixing suspended Boral, Elephant (or equivalent) gypsum board false ceiling with thickness not less than 12mm with exterior surfaced duly taped at all joints, leveled with gypsum putty, with surface prepared with POP through entire area, branded suspension hangers in standard gap, all complete as per design, drawing, detail, size, specification and instruction of engineer. (including ATM area)	Sq.ft.	250.00		-	
<b>7.00</b>	<b>Vertical Blinds</b>				-	
	Supply and installation of 100 mm vertical blinds with dust proof and stain-resistance fabric of approved quality and colour , all complete as per drawing, specification and instructions. Note: use wherever applicable for windows & partation only .	Sq.ft.	30.00		-	
<b>8.00</b>	<b>Aluminum partition and door</b>				-	
i	Fabrication, supply and installation bronze colored ( frame size: 38mmx78mmx1.3mm) aluminum Glass partition (5 mm thick clear signing glass , black/white frosted Sunfilm, 8mm wooden coloured Nepal Board or ply laminated with wooden formica, , and fixing accessories, guide, neoprene, Clear gasket, screw, silicon seal etc.) as per site condition. (including ATM area)	Sq.ft.	40.00		-	
ii	Fabrication, supply and installation bronze colored Frame Door ( frame size: 78mmx78mmx1.3mm) aluminum (5 mm thick clear glass, black/white frosted Sunfilm10mm Nepal Board/ ACP Board lock and fixing accessories, guide, neoprene, gasket, screw, silicon seal, Door closure, door stopper etc.) as per site condition (At ATM)	Sq.ft.	21.00		-	
iii	Fabrication, supply and installation bronze colored ( frame size: 38mmx78mmx1.3mm) aluminum Glass swing glass shutter (12 mm thick clear signing glass,black/white frosted Sunfilm, 18" SS Handle, lock and fixing accessories, guide, neoprene, gasket, screw, silicon seal etc.) as per site condition	Sq.ft.	30.00		-	
iii	Fabrication, Supply and installation of aluminum sliding window with natural color anodized aluminium section of 63x38mm framing tube, 100mm door series, 5mm clear glass ,frosted sticker and other required hardware and accessories ,all complete as per design, drawing, detail, size, specification and instruction of engineer.	Sq.ft.	-		-	
<b>9.00</b>	<b>Wooden Partition</b>				-	

*My*



*Smdel*

## GREEN DEVELOPMENT BANK LIMITED

Branch office : BAGAR, KASKI DISTRICT

### Estimation Cost of Core Banking

**Bill No.3: Civil and Furnishing work**

S.N	Description of works	Unit	Qty.	Rate	Amount	Remarks
i	Supply and fixing in position 3" thick full/half wooden partitions both sides laminated with 1 mm thick Formica, saal wood frames, 6mm thick commercial plywood ( Surya / Sagoon ) (both sides), lipping, beading, 5mm thick clear glasses, black/white frosted Sunfilm, hardwires ( hinges, handles, tower bolts, nail screws etc. for partition) fixing materials, Wooden Seasoned Sisau Skirting , polishing and necessary works as per drawing and instructions:	Sq.ft.	20.00		-	
ii	Cladding of Pillar / wall with 12mm thick ply ( surya / sagon ) and laminated with 1mm thick formica as per design	Sq.ft.			-	
<b>10.00</b>	<b>Flush door</b>				-	
i	Supply and fixing 32 mm thick flush door shutter with Formica pasted , 5mm clear glass and black/white frosted Sunfilm as per design and sal /sisum wood beading including hinges, locking set, door closure, door stopper ( where necessary ) painting all complete as per drawing and the instruction. Size: as per site condition.	Sq.ft.	18.00		-	
<b>11.00</b>	<b>Wooden door frame</b>				-	
	Fabrication, Supply and installation of saal wooden door frame of 4"x2.5" size with necessary accessories, all complete as per design, drawing, detail, size, specification and instruction of engineer.(With vault door)	Nos	1.00		-	
<b>12.00</b>	<b>Putty and Paint work</b>				-	
i	<b>Putty work</b>				-	
	Supply and applying Two coat of Birla white putty(whenever applicable) to walls and ceilings in smooth and even finish, all complete as per drawing, specification and instructions. (including ATM area)	Sq.ft.	1,500.00		-	
ii	<b>Emulsion Painting work (Interior and Exterior Emulsion)</b>				-	
	Two coats of approved shade of First quality acrylic emulsion painting on any surface and shape, size and height, inclusive of cleaning and applying required coats of primer to get uniform colour and finish, complete as per drawings, specifications and instructions. Make: Jenson & Nicholson, Nerolack, Berger or equivalent. (including ATM area)	Sq.ft.	1,500.00		-	
iii	<b>Enameled Paint work</b>				-	
	Two coats of enamel paint over the existing colour, finished including, surface preparation all complete as per drawing, specification and instruction. Make: Asian Paint, Jenson & Nicholson, Nerolac , Berger or equivalent. (including ATM area)	Sq.ft.	350.00		-	
<b>13.00</b>	<b>Metal Work</b>				-	
i	<b>Metallic Vault Door</b>				-	

*[Handwritten Signature]*



*[Handwritten Signature]*



# GREEN DEVELOPMENT BANK LIMITED

Branch office : BAGAR, KASKI DISTRICT

## Estimation Cost of Core Banking

### Bill No.3: Civil and Furnishing work

S.N	Description of works	Unit	Qty.	Rate	Amount	Remarks
i	Supply and fixing in position MS door (4" - Heavy Duty Channel frame 5" channel) for vault 4 mm mild steel plate door with 4 mm plate support for locking area, high quality double locking lock, 12 liv brass liv lock ss key with double set , 1.6 mm cover for locking box, heavy duty handle, 2 mm thick round pipe on grill gate with heavy 2 mm thick HR sheet , with excuast fan	Set	1.00		-	
ii	Supply and installation of metal battery shelf of three layer with metal primer finishing and two coat of enamel paint finishing all complete. ( size 5'-0" x 1'-10"x 4'-0" )	LS	1.00		-	
iii	Supply and installation of granite over the kitchen slab with 1:5 cement sand ratio including moulding finishing all complete.	Sq.ft	7.32		-	
iv	Supply and Fitting of MS Grill in the windows 10mm square rod with all finishing all complete as per design	sq.ft	18.00		-	
v	Supply and installation of MS frame channel gate including two coat of paint with metal primer fininshing all complete.	Sq.ft.	18.00		-	
14.00	Sanitary works				-	
i	Plumbing and all complete work for pantry				-	
	Supply and fixing of Stainless steel sink ( heavy/ low noise ), stainless steel tap ( jaquar/ equivalent ), Soap tray 15 x 15cm (recessed) with (1/2)" CPVC pipe from Water tank to Kitchen including elbow , socket , gate valve , ball cock, glue etc all complete	Job	1.00		-	



## GREEN DEVELOPMENT BANK LIMITED

Branch office : BAGAR, KASKI DISTRICT

### Estimation Cost of Core Banking

#### Bill No.3: Civil and Furnishing work

S.N	Description of works	Unit	Qty.	Rate	Amount	Remarks
ii	<b>Plumbing and all complete work for toilet</b>				-	
	Supply and installation of new Self Suction Commode including towel holder, Sprayer, Paper Holder etc fitting all complete ( jaquar, Hindware, Parryware or Somany ), basin with stainless steel tap fitting all complete.( jaquar / parryware / hindware / somany ),Soap tray 15 x 15cm (recessed),Mirror ,stainless steel tap ( jaquar/ equivalent	Job	-		-	
iii	Wall tile for Toilet and Kitchen	sq.ft	-		-	
	<b>Total of Bill no. 3</b>				-	

*Res*



*[Handwritten signature]*

## GREEN DEVELOPMENT BANK LIMITED

Branch office : BAGAR, KASKI DISTRICT

**Cost of Core Banking**

**Bill No.4: Electrical and Allied work**

S.N.	Description of works	Unit	Qty.	Rate	Amount
<b>1.00</b>	<b>DISTRIBUTION BOARD MAIN</b>				
i	Design, fabrication, supply, delivery, installation, testing and commissioning of cubical type distribution board (440V, 50 Hz) with double cover lockable and required equipments, made from MS steel 16 SWG thickness with circuit breakers, SPNE copper busbars including the necessary connecting, earthing and insulating materials, civil works as per the drawings, site conditions, specifications, electricity rules and instructions all complete. ( SIMENCE / LG / HAVELL'S / GE/ CLPSAL)	Set	1.00		-
<b>2.00</b>	<b>UPS- DB</b>				
	Supply, installation and connection of 1 nos. 32 A DP MCB, : 16 nos. SP MCB	Set	1.00		-
<b>3.00</b>	<b>LT FEEDER CABLES / WIRES</b>				
i	Supply and laying of 4 x 25 sq.mm aluminium unarmod cable ( <i>prakas/poineer/janta</i> )	Rmtr.	10.00		-
ii	Supply and laying of 4 x 16 sq.mm copper unarmod cable ( <i>prakas/poineer/janta</i> )	Rmtr.	35.00		-
iii	Supply and laying of 3 x 6 sq.mm copper unarmod cable ( <i>prakas/poineer/janta</i> )	Rmtr.	20.00		-
<b>4.00</b>	<b>LIGHT AND FAN POINTS WIRING</b>				
	Supply, delivery, conduit laying with wiring of following light, fan and power points with 440/660 V grade copper wire and through 16 /20mm medium pressure HDP pipes (concealed) PVC ducts (Exposed area) in walls, ceilings and floors including 18 SWG GI sheet metal box with required civil works as per the site condition, drawings, specifications, electricity rules and instructions all complete.( Type: Nepal / Pioneer cable or equivalent )				-
i	Light points with 2x3/22 SWG PVC insulated copper wire 3"x3" with metal box.	Pts.	35.00		-
ii	Fan points with 2x3/22 SWG PVC insulated copper wire 3"x3" with metal box.	Pts.	6.00		-
<b>5.00</b>	<b>POWER POINT WIRING</b>				
i	Supply, delivery and wiring of <b>City power points</b> with 2 x 7/22 +1 x1/18 SWG PVC insulated 650/1100 V grade copper wire through 20/25 mm high quality HDP pipes concealed in walls, ceiling and floors including 18 SWG GI sheet metal box, junction box, pipe kila ( <i>prakas/poineer/janta</i> )	Pts.	8.00		-
ii	Supply, delivery and wiring of <b>UPS power points</b> from UPS to various points with 2 x 3/20 +1 x1/18 SWG PVC insulated 650/1100 V grade copper wire through 20/25 mm high quality HDP pipes concealed in walls, ceiling and floors including 18 SWG GI sheet. ( <i>prakas/poineer/janta</i> )	Pts.	25.00		-
iii	Three phase/Single phase <b>A/C point wiring</b> by 7/20 x2+ 3/22x1copper wire from DB to A/C unit ( <i>prakas/poineer/janta</i> )	Pts.	3.00		-
<b>6.00</b>	<b>SWITCHES / SOCKETS</b>				

*[Handwritten Signature]*



*[Handwritten Signature]*

Bill No.4: Electrical and Allied work

	Supply, delivery, installation, testing and commissioning of the following modular type switches, sockets and plugs with all required accessories including necessary connecting, fixing, insulating and jointing materials and redoing the chiseled areas with <i>(Make:- Roma/Clipsal/Orange)</i>				
i	Single gang one way switch with plate	Nos.	8.00		
ii	Two gang one way switch with plate	Nos.			
iii	Three gang one way switch with plate	Nos.			
iv	Four gang one way switch with plate	Nos.			
v	Five gang one way switch with plate	Nos.			
vi	Six gang one way switch with plate	Nos.			
vii	16A switched Univrsal socket	Nos.	8.00		-
viii	13A switched Univrsal socket	Nos.	31.00		-
ix	20A 1 gang DP Switch for AC	Nos.	3.00		
7.00	Supply, delivery, installation, testing and commissioning of the following light fixtures with holders, chokes, ballast's, lamps, starters, dimmers, tube lights, lamps, transformers, control gears and accessories (wherever applicable) including the necessary connection, fixing and insulating materials as per the drawings, site conditions, specifications and instructions all compelet. (Type: wipro/Heavls or equivalent)				
i	1x12 w LED recessed/surface type down light ( legro/ orange or equivalent )	set	35.00		-
ii	24"x24" 36 w LED surface/recessed light fixture ( legro/ orange or equivalent )	set	-		-
iii	Rope Light Blue warm colour	Rnf	-		-
8.00	<b>Wall fan/Exhaust fan</b>				
	Supply, delivery, installation, testing and commissioning of the following ,wall, and exhaust fans including fixing clamps & necessary connecting fixing & insulating materiala & accessories as per drawing specifications, electricitu rules, site conditions & instructions all complete. <i>(Usha/Orent)</i>				
i	Supply, delivery, and connection of Ceiling Exhaust fan for pantry, and wall for vault Exhaust Fan 9" with iron frame	Nos.	1.00		-
9.00	<b>EARTHING</b>				
	Supply, installation, testing and connection of the following earthing set with copper earth plate of standard size, thick copper coated rod at least 3m. Below ground level surrounded by alternate layers of salt and charcole's mixture and common soil to thickness of 3m. grounded around the electrode completely grounded by means of SWG bare copper conductor which running for system and MDB board including tha necessary connection fixing, adjoining materials as as excavaation & backfilling work as per the drawings, specifications suchas the earth resistance should not exceed 4-6 Ohms for mains , electricity rules & instructions all complete.	Set	2.00		-
10.00	<b>Manual Change Over Switch</b>				
	Supply, installation of manual type change over switch 100amp/3pole and selector type <i>(Mex, Havell,s/schlnder )</i>	Nos.	1.00		-
11.00	<b>Point wiring for hoding board</b>	Pts.	1.00		-
<b>Total of Bill no. 4</b>					-

*Jy*



*[Signature]*

# GREEN DEVELOPMENT BANK LIMITED

Branch office : BAGAR, KASKI DISTRICT

## Estimation Cost of Core Banking

Bill No.5: CCTV

S.N.	Description of works	Unit	Qty.	Rate	Amount
1.00	<b>CCTV CAMERA POINTS WIRING</b>				-
	Supply, delivery, wiring, conduit laying of CC-TV points with cat 6 UTP cable (from NVR to individual points) through 16 / 20mm dia. HDP pipe concealed in ceilings, walls and floors including the necessary connecting, fixing, insulation all complete. <i>(cables make AMP/Alantek/D-link/ or equivalent)</i>	Pts.	8.00		-
<b>Total of Bill no. 4</b>					-



## GREEN DEVELOPMENT BANK LIMITED

Branch office : BAGAR, KASKI DISTRICT

### Estimation Cost of Core Banking

Bill No.6: Computer

S.N.	Description of works	Unit	Qty.	Rate	Amount
1.00	<b>TELEPHONE POINTS WIRING</b>				-
	Supply, delivery and wiring of telephone points with 2 pair telecommunication cable from EPABX to the telephone points through HDP pipe PVC listed in the ceilings, walls including the necessary connecting, fixing, insulating jointing materials all complete works. <i>(prakas/poineer/janta)</i>	Pts.	9.00		-
2.00	<b>RJ 11 TELEPHONE SOCKETS</b>				-
	Supply, delivery and installation of plate type RJ 11 Telephone sockets with front plate suitable for mounting and flux finished on wall / partitions with all accessories including the necessary connection materials and civil works as per the drawings. <i>(Roma/clipsal)</i>	Nos.	9.00		-
3.00	<b>COMPUTER NETWORK POINTS WIRING</b>				-
	Supply, delivery, wiring, conduit laying of computer networking points with cat 6 UTP cable (from server room to individual points) through 16 / 20mm dia. HDP pipe concealed in ceilings, walls and floors including the necessary connecting, fixing, insulation all complete. <i>(cables make AMP/Alantek/D-link)</i>	Pts.	10.00		-
4.00	<b>CAT 6 RJ 45 COMPUTER SOCKETS</b>				-
	Supply, delivery and installation of modular type CAT 6 RJ 45 computer sockets with front plate suitable for mounting and flux finished on wall / partitions with all accessories including the necessary connection materials and civil works as per the drawing. <i>(Roma/clipsal NO EQUIVALENT ACCEPTED)</i>	Nos.	10.00		-
5.00	<b>TELEPHONE CABLES</b>				-
	Supply, delivery, installation, testing and commissioning of the following Telephone cables through medium pressure HDP conduits concealed in wall, ceiling, floors of an approved quality and redoing the chiseled areas with cement and sand mortar as per drawing				-
	10 pair telephone cable - normal copper cable	Rnmtr.	25.00		-
<b>Total of Bill no. 4</b>					-



## GREEN DEVELOPMENT BANK LIMITED

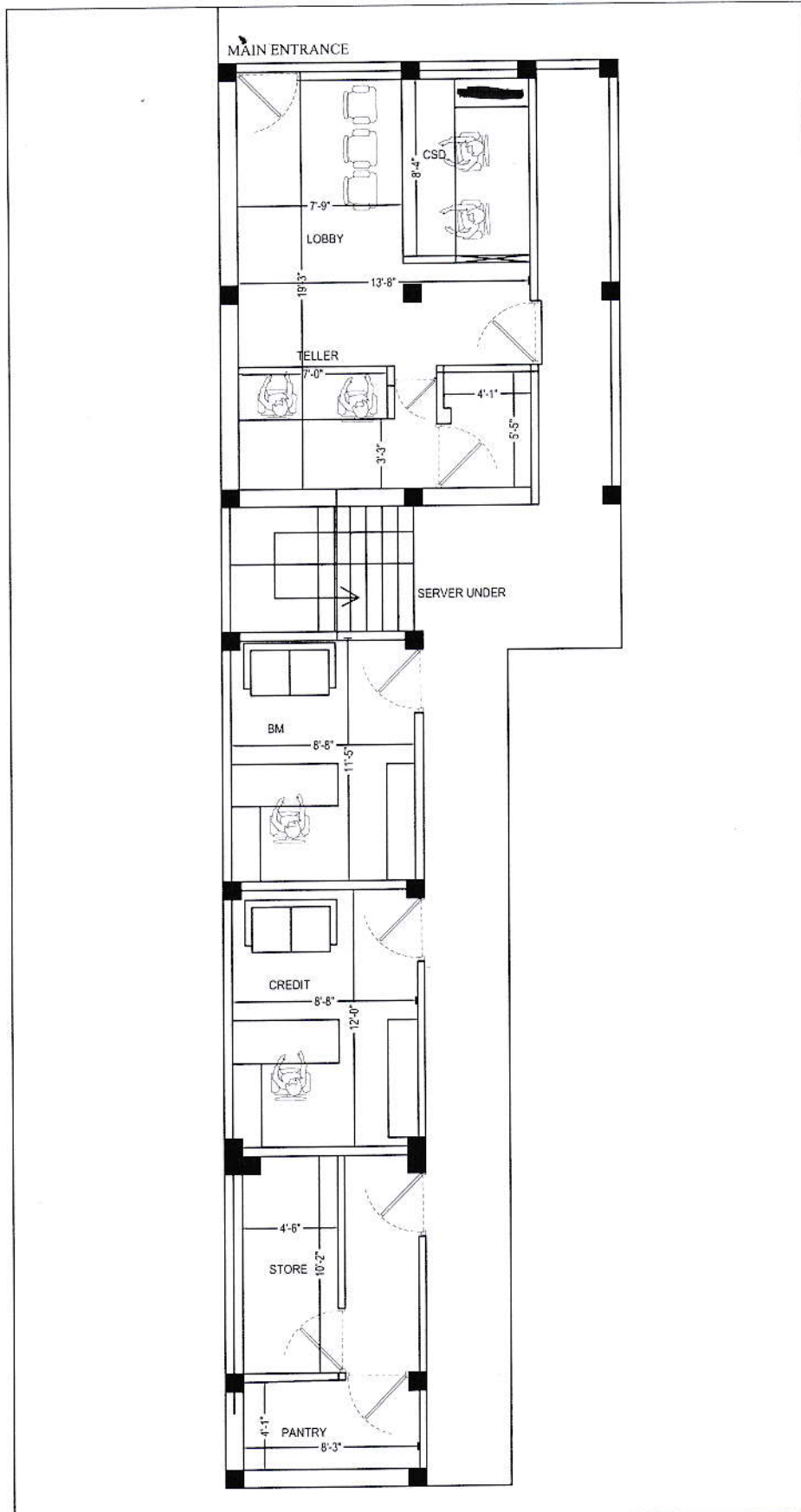
Branch office : BAGAR, KASKI DISTRICT

### Estimation Cost of Core Banking

Bill No.7: Air condition work

S.N.	Particular	Unit	Quantity	Rate	Amount
1	Ceiling Cassette type Split AC (2 ton ) (Hyundai Brand / Midea/ Sakura ONLY)	Nos	1		-
2	Ceiling Cassette type Split AC ( 1 ton ) (Hyundai Brand or Equivalent in BM room )	Nos	0		-
3	Wall mounted type Split AC (0.75 ton ) (Hyundai Brand or Equivalent )	Nos	1		-
4	Installation and Fitting Charge Including with required materials. Maximum Piping Distance upto 10 ft. NRs. .... per ft. shall be charged extra Piping exceeding 10 feets in wall mount type not in ceiling casstette type	Rft	100		-
<b>SUB TOTAL</b>					-





<b>PROJECT:</b> GREEN DEVELOPMENT BANK LTD. BRANCH - BAGAR	<b>TITLE:</b> GROUND FLOOR PLAN (Area - 589 sqft)	<b>DATE:</b> HITECH Engineering Service PVT.LTD Pokhara Metropolitan City, Kaski District	<b>SCALE:</b> A1: P.L. 1:100	<b>APPROVED BY:</b> 
--	---	---	------------------------------------	--

